

Premier Timberframe Homes

Premier Timberframe Homes, precision-built with care in **Co. Kildare**, building dream homes in every corner of Ireland.



PRODUCT CATALOGUE

2026 Edition

Designed for Living, **Built for Life**





A NOTE FROM OUR OWNER



After nearly 23 years as a carpenter, my journey with timber frame construction has taken me across the globe—from the UK and the U.S. to Australia and New Zealand. One of the most defining chapters of my career was spending a year contributing to the Christchurch Earthquake Rebuild. It was a demanding and intense environment, but seeing a community rise again through resilient, smart building was incredibly rewarding.

I founded Premier TimberFrame Homes because I am a firm believer in the benefits of timber frame living. Not only are these homes exceptionally eco-friendly, but their thermal efficiency makes them a smarter choice for the modern homeowner.

My goal is to provide a path to homeownership that is faster and more affordable than traditional builds, without ever compromising on the quality of craftsmanship. When you choose us, you aren't just getting a house; you're getting two decades of international expertise. From the moment you order, we can have your home manufactured in approximately 12 weeks, and once your site is ready, our team can have it standing in as little as two weeks.

I take great pride in what we build, and I look forward to helping you create a home that is built to last.

David McManus,
Managing Director





Premier Timberframe Homes

GALTEE MODEL

Warm, Affordable & Long-lasting Homes. Manufactured in Co. Kildare

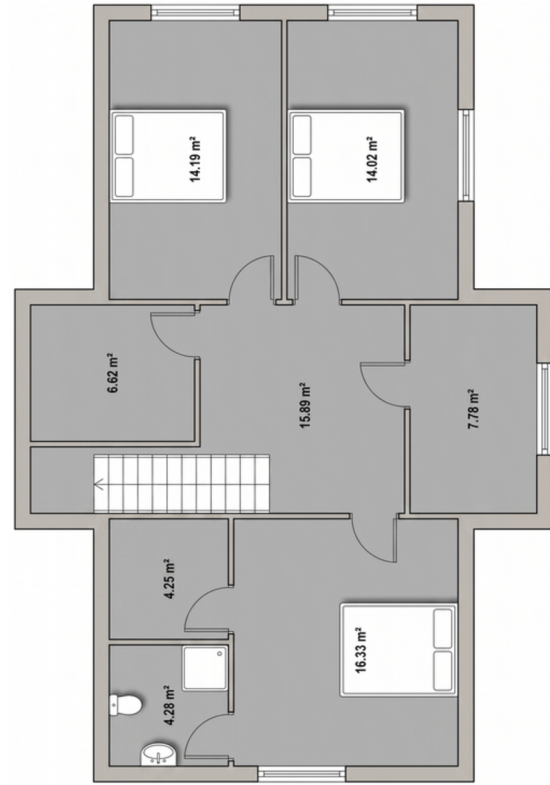
- ✔ Roof Trusses (NSAI APPROVED)
- ✔ Engineer's Design Certificate
- ✔ House Structure (Closed Panel System)
- ✔ 140mm CLS Treated Stud
- ✔ High Density Mineral Wool Insulation
- ✔ Airtightness Membrane & Tape
- ✔ 50mm PIR Over Stud
- ✔ Factory Fitted Service Cavity
- ✔ Render board finish (ready for your plasterer)
- ✔ Tiled roof
- ✔ Optional wall and roof zinc cladding (at additional cost)
- ✔ Double or Triple Glazed Windows/Doors
- ✔ Gutters and downpipes



We supply & fit in Ireland, The UK & Internationally

FLOOR PLANS & PRICING

GALTEE MODEL



OPTION 1:

TIMBER FRAME STRUCTURE (COMPLIANCE INSULATION PACKAGE 0.15 W/M2K U-VALUE)

Product/Service: Erected 2-Storey Timber Frame Structure with Compliance Insulation Package

Total (ex. VAT): €73,068.38

OPTION 2:

TIMBER FRAME STRUCTURE (PASSIVE INSULATION PACKAGE 0.13 W/M2K U-VALUE)

Product/Service: Erected 2-Storey Timber Frame Structure with Passive Insulation Package

Total (ex. VAT): €84,399.84

OPTION 3:

EXTERNAL RENDER PACKAGE (COMPLIANCE INSULATION PACKAGE 0.15 W/M2K U-VALUE)

Product/Service: Erected 2-Storey External Render with Compliance Insulation Package

Total (ex. VAT): €156,471.26

OPTION 4:

EXTERNAL RENDER PACKAGE (PASSIVE INSULATION PACKAGE 0.13 W/M2K U-VALUE)

Product/Service: Erected 2-Storey External Render with Passive Insulation Package

Total (ex. VAT): €181,814.12



Premier Timberframe Homes

L-SHAPED MODEL

Warm, Affordable & Long-lasting Homes. Manufactured in Co. Kildare

- ✔ Roof Trusses (NSAI APPROVED)
- ✔ Engineer's Design Certificate
- ✔ House Structure (Closed Panel System)
- ✔ 140mm CLS Treated Stud
- ✔ High Density Mineral Wool Insulation
- ✔ Airtightness Membrane & Tape
- ✔ 50mm PIR Over Stud
- ✔ Factory Fitted Service Cavity
- ✔ Render board finish (ready for your plasterer)
- ✔ Tiled roof
- ✔ Optional wall and roof zinc cladding (at additional cost)
- ✔ Double or Triple Glazed Windows/Doors
- ✔ Gutters and downpipes



We supply & fit in Ireland, The UK & Internationally

FLOOR PLANS & PRICING

L-SHAPED MODEL



OPTION 1:

TIMBER FRAME STRUCTURE (COMPLIANCE INSULATION PACKAGE 0.15 W/M2K U-VALUE)

Product/Service: Erected 1-Storey Timber Frame Structure with Compliance Insulation Package

Total (ex. VAT): €70,766.30

OPTION 2:

TIMBER FRAME STRUCTURE (PASSIVE INSULATION PACKAGE 0.13 W/M2K U-VALUE)

Product/Service: Erected 1-Storey Timber Frame Structure with Passive Insulation Package

Total (ex. VAT): €81,203.40

OPTION 3:

EXTERNAL RENDER PACKAGE (COMPLIANCE INSULATION PACKAGE 0.15 W/M2K U-VALUE)

Product/Service: Erected 1-Storey External Render with Compliance Insulation Package

Total (ex. VAT): €145,278.10

OPTION 4:

EXTERNAL RENDER PACKAGE (PASSIVE INSULATION PACKAGE 0.13 W/M2K U-VALUE)

Product/Service: Erected 1-Storey External Render with Passive Insulation Package

Total (ex. VAT): €168,823.20



Premier Timberframe Homes

CURRAGH MODEL

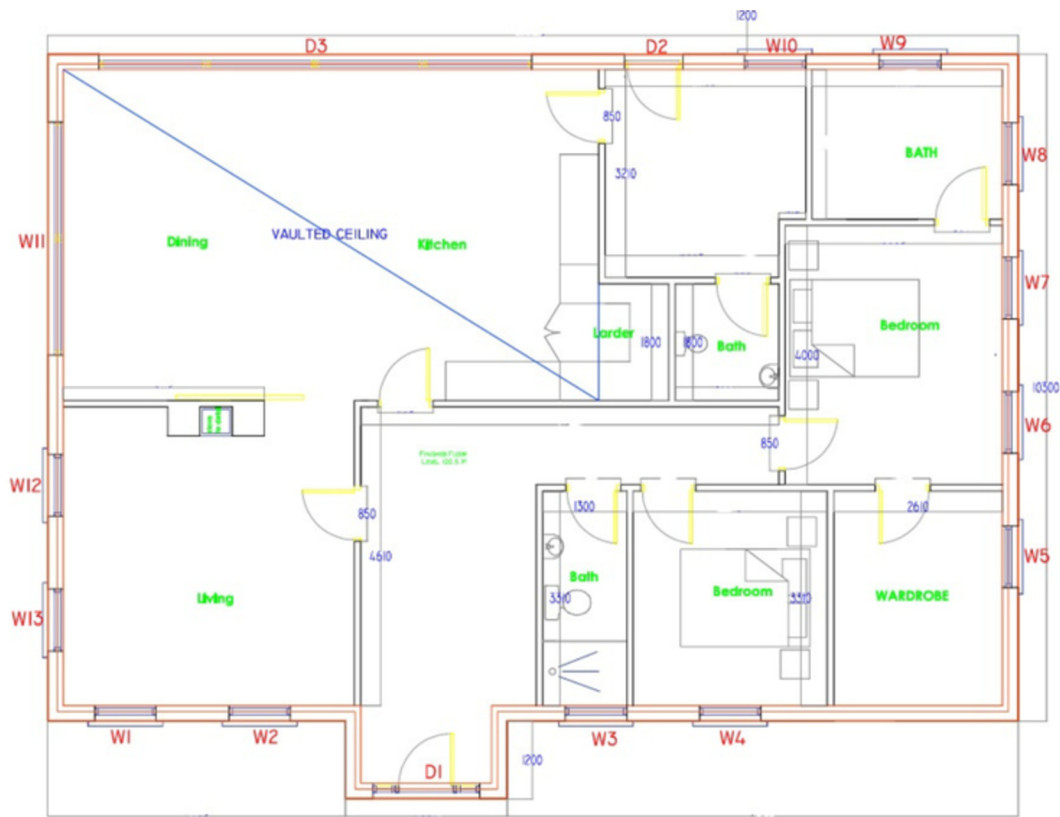
Warm, Affordable & Long-lasting Homes. Manufactured in Co. Kildare

- ✔ Roof Trusses (NSAI APPROVED)
- ✔ Engineer's Design Certificate
- ✔ House Structure (Closed Panel System)
- ✔ 140mm CLS Treated Stud
- ✔ High Density Mineral Wool Insulation
- ✔ Airtightness Membrane & Tape
- ✔ 50mm PIR Over Stud
- ✔ Factory Fitted Service Cavity
- ✔ Render board finish (ready for your plasterer)
- ✔ Tiled roof
- ✔ Optional wall and roof zinc cladding (at additional cost)
- ✔ Double or Triple Glazed Windows/Doors
- ✔ Gutters and downpipes



We supply & fit in Ireland, The UK & Internationally

CURRAGH MODEL



OPTION 1:

TIMBER FRAME STRUCTURE (COMPLIANCE INSULATION PACKAGE 0.15 W/M2K U-VALUE)

Product/Service: Erected 0-Storey Timber Frame Structure with Compliance Insulation Package

Total (ex. VAT): €67,680.80

OPTION 2:

TIMBER FRAME STRUCTURE (PASSIVE INSULATION PACKAGE 0.13 W/M2K U-VALUE)

Product/Service: Erected 0-Storey Timber Frame Structure with Passive Insulation Package

Total (ex. VAT): €77,204.40

OPTION 3:

EXTERNAL RENDER PACKAGE (COMPLIANCE INSULATION PACKAGE 0.15 W/M2K U-VALUE)

Product/Service: Erected 0-Storey External Render with Compliance Insulation Package

Total (ex. VAT): €197,023.84

OPTION 4:

EXTERNAL RENDER PACKAGE (PASSIVE INSULATION PACKAGE 0.13 W/M2K U-VALUE)

Product/Service: Erected 0-Storey External Render with Passive Insulation Package

Total (ex. VAT): €218,041.44



Premier Timberframe Homes

KILDARE ATTIC MODEL

Warm, Affordable & Long-lasting Homes. Manufactured in Co. Kildare

- ✔ Roof Trusses (NSAI APPROVED)
- ✔ Engineer's Design Certificate
- ✔ House Structure (Closed Panel System)
- ✔ 140mm CLS Treated Stud
- ✔ High Density Mineral Wool Insulation
- ✔ Airtightness Membrane & Tape
- ✔ 50mm PIR Over Stud
- ✔ Factory Fitted Service Cavity
- ✔ Render board finish (ready for your plasterer)
- ✔ Tiled roof
- ✔ Optional wall and roof zinc cladding (at additional cost)
- ✔ Double or Triple Glazed Windows/Doors
- ✔ Gutters and downpipes



We supply & fit in Ireland, The UK & Internationally

KILDARE ATTIC MODEL



OPTION 1:
TIMBER FRAME STRUCTURE (COMPLIANCE INSULATION PACKAGE 0.15 W/M2K U-VALUE)

Product/Service: Erected Timber Frame Structure with Compliance Insulation Package

[Contact for pricing](#)

OPTION 2:
TIMBER FRAME STRUCTURE (PASSIVE INSULATION PACKAGE 0.13 W/M2K U-VALUE)

Product/Service: Erected Timber Frame Structure with Passive Insulation Package

[Contact for pricing](#)

OPTION 3:
EXTERNAL RENDER PACKAGE (COMPLIANCE INSULATION PACKAGE 0.15 W/M2K U-VALUE)

Product/Service: Erected External Render with Compliance Insulation Package

[Contact for pricing](#)

OPTION 4:
EXTERNAL RENDER PACKAGE (PASSIVE INSULATION PACKAGE 0.13 W/M2K U-VALUE)

Product/Service: Erected External Render with Passive Insulation Package

[Contact for pricing](#)



Premier Timberframe Homes

KILKENNY MODEL

Warm, Affordable & Long-lasting Homes. Manufactured in Co. Kildare

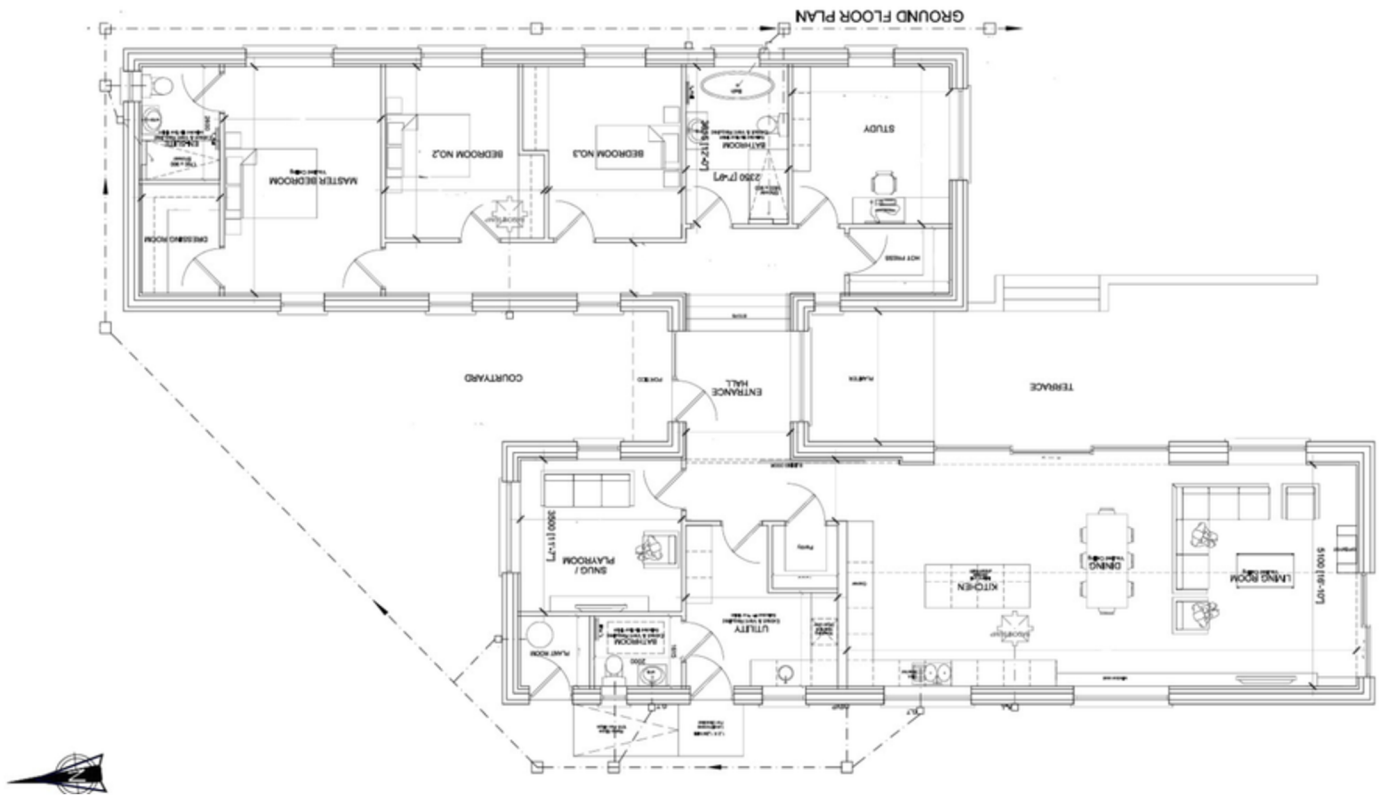
- ✔ Roof Trusses (NSAI APPROVED)
- ✔ Engineer's Design Certificate
- ✔ House Structure (Closed Panel System)
- ✔ 140mm CLS Treated Stud
- ✔ High Density Mineral Wool Insulation
- ✔ Airtightness Membrane & Tape
- ✔ 50mm PIR Over Stud
- ✔ Factory Fitted Service Cavity
- ✔ Render board finish (ready for your plasterer)
- ✔ Tiled roof
- ✔ Optional wall and roof zinc cladding (at additional cost)
- ✔ Double or Triple Glazed Windows/Doors
- ✔ Gutters and downpipes



We supply & fit in Ireland, The UK & Internationally

FLOOR PLANS & PRICING

KILKENNY MODEL



OPTION 1:

TIMBER FRAME STRUCTURE (COMPLIANCE INSULATION PACKAGE 0.15 W/M2K U-VALUE)

Product/Service: Erected 2-Storey Timber Frame Structure with Compliance Insulation Package

Total (ex. VAT): €89,865.60

OPTION 2:

TIMBER FRAME STRUCTURE (PASSIVE INSULATION PACKAGE 0.13 W/M2K U-VALUE)

Product/Service: Erected 2-Storey Timber Frame Structure with Passive Insulation Package

Total (ex. VAT): €102,445.80

OPTION 3:

EXTERNAL RENDER PACKAGE (COMPLIANCE INSULATION PACKAGE 0.15 W/M2K U-VALUE)

Product/Service: Erected 2-Storey External Render with Compliance Insulation Package

Total (ex. VAT): €194,913.40

OPTION 4:

EXTERNAL RENDER PACKAGE (PASSIVE INSULATION PACKAGE 0.13 W/M2K U-VALUE)

Product/Service: Erected 2-Storey External Render with Passive Insulation Package

Total (ex. VAT): €223,398.20



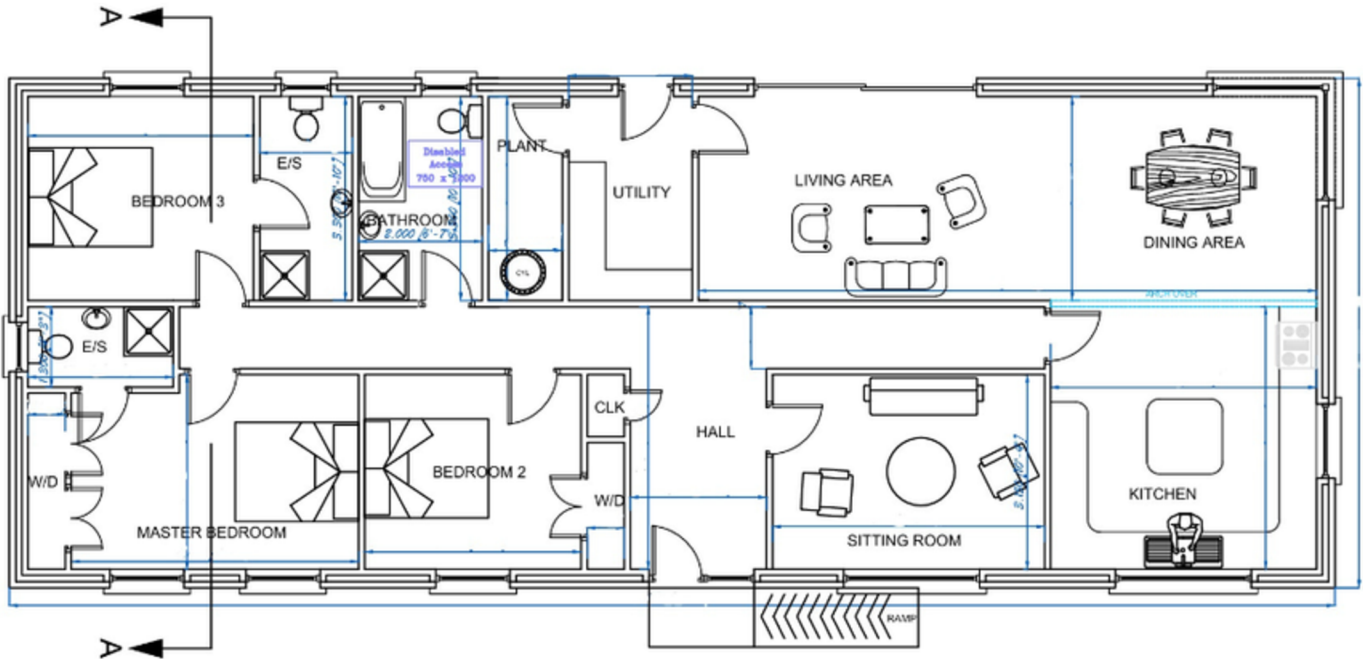
Warm, Affordable & Long-lasting Homes. Manufactured in Co. Kildare

- ✔ Roof Trusses (NSAI APPROVED)
- ✔ Engineer's Design Certificate
- ✔ House Structure (Closed Panel System)
- ✔ 140mm CLS Treated Stud
- ✔ High Density Mineral Wool Insulation
- ✔ Airtightness Membrane & Tape
- ✔ 50mm PIR Over Stud
- ✔ Factory Fitted Service Cavity
- ✔ Render board finish (ready for your plasterer)
- ✔ Tiled roof
- ✔ Optional wall and roof zinc cladding (at additional cost)
- ✔ Double or Triple Glazed Windows/Doors
- ✔ Gutters and downpipes



We supply & fit in Ireland, The UK & Internationally

OFFALY MODEL



OPTION 1:

TIMBER FRAME STRUCTURE (COMPLIANCE INSULATION PACKAGE 0.15 W/M2K U-VALUE)

Product/Service: Erected 1-Storey Timber Frame Structure with Compliance Insulation Package

Total (ex. VAT): €58,025.00

OPTION 2:

TIMBER FRAME STRUCTURE (PASSIVE INSULATION PACKAGE 0.13 W/M2K U-VALUE)

Product/Service: Erected 1-Storey Timber Frame Structure with Passive Insulation Package

Total (ex. VAT): €66,435.00

OPTION 3:

EXTERNAL RENDER PACKAGE (COMPLIANCE INSULATION PACKAGE 0.15 W/M2K U-VALUE)

Product/Service: Erected 1-Storey External Render with Compliance Insulation Package

Total (ex. VAT): €129,085.00

OPTION 4:

EXTERNAL RENDER PACKAGE (PASSIVE INSULATION PACKAGE 0.13 W/M2K U-VALUE)

Product/Service: Erected 1-Storey External Render with Passive Insulation Package

Total (ex. VAT): €147,975.00



Premier Timberframe Homes

U MODEL

Warm, Affordable & Long-lasting Homes. Manufactured in Co. Kildare

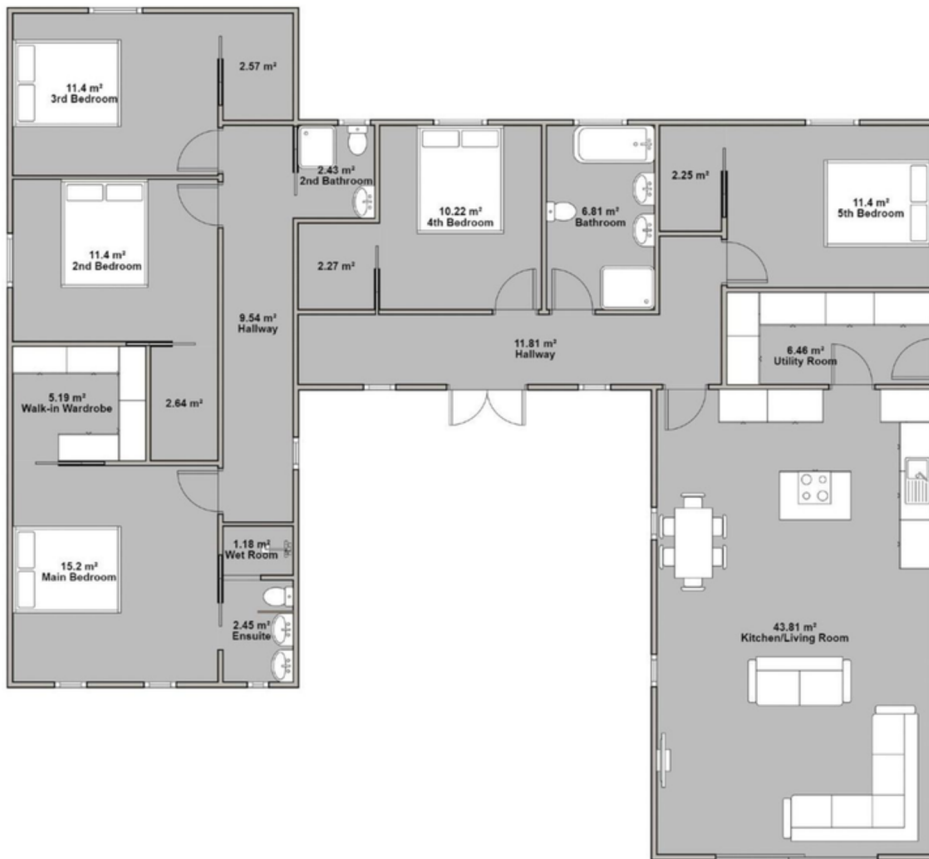
- ✔ Roof Trusses (NSAI APPROVED)
- ✔ Engineer's Design Certificate
- ✔ House Structure (Closed Panel System)
- ✔ 140mm CLS Treated Stud
- ✔ High Density Mineral Wool Insulation
- ✔ Airtightness Membrane & Tape
- ✔ 50mm PIR Over Stud
- ✔ Factory Fitted Service Cavity
- ✔ Render board finish (ready for your plasterer)
- ✔ Tiled roof
- ✔ Optional wall and roof zinc cladding (at additional cost)
- ✔ Double or Triple Glazed Windows/Doors
- ✔ Gutters and downpipes



We supply & fit in Ireland, The UK & Internationally

FLOOR PLANS & PRICING

U MODEL



OPTION 1:

TIMBER FRAME STRUCTURE (COMPLIANCE INSULATION PACKAGE 0.15 W/M2K U-VALUE)

Product/Service: Erected Timber Frame Structure with Compliance Insulation Package

[Contact for pricing](#)

OPTION 2:

TIMBER FRAME STRUCTURE (PASSIVE INSULATION PACKAGE 0.13 W/M2K U-VALUE)

Product/Service: Erected Timber Frame Structure with Passive Insulation Package

[Contact for pricing](#)

OPTION 3:

EXTERNAL RENDER PACKAGE (COMPLIANCE INSULATION PACKAGE 0.15 W/M2K U-VALUE)

Product/Service: Erected External Render with Compliance Insulation Package

[Contact for pricing](#)

OPTION 4:

EXTERNAL RENDER PACKAGE (PASSIVE INSULATION PACKAGE 0.13 W/M2K U-VALUE)

Product/Service: Erected External Render with Passive Insulation Package

[Contact for pricing](#)

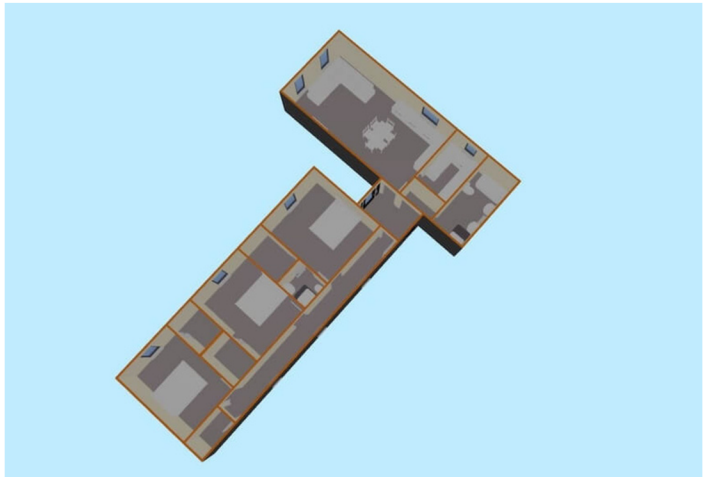


Premier Timberframe Homes

T-SHAPED MODEL

Warm, Affordable & Long-lasting Homes. Manufactured in Co. Kildare

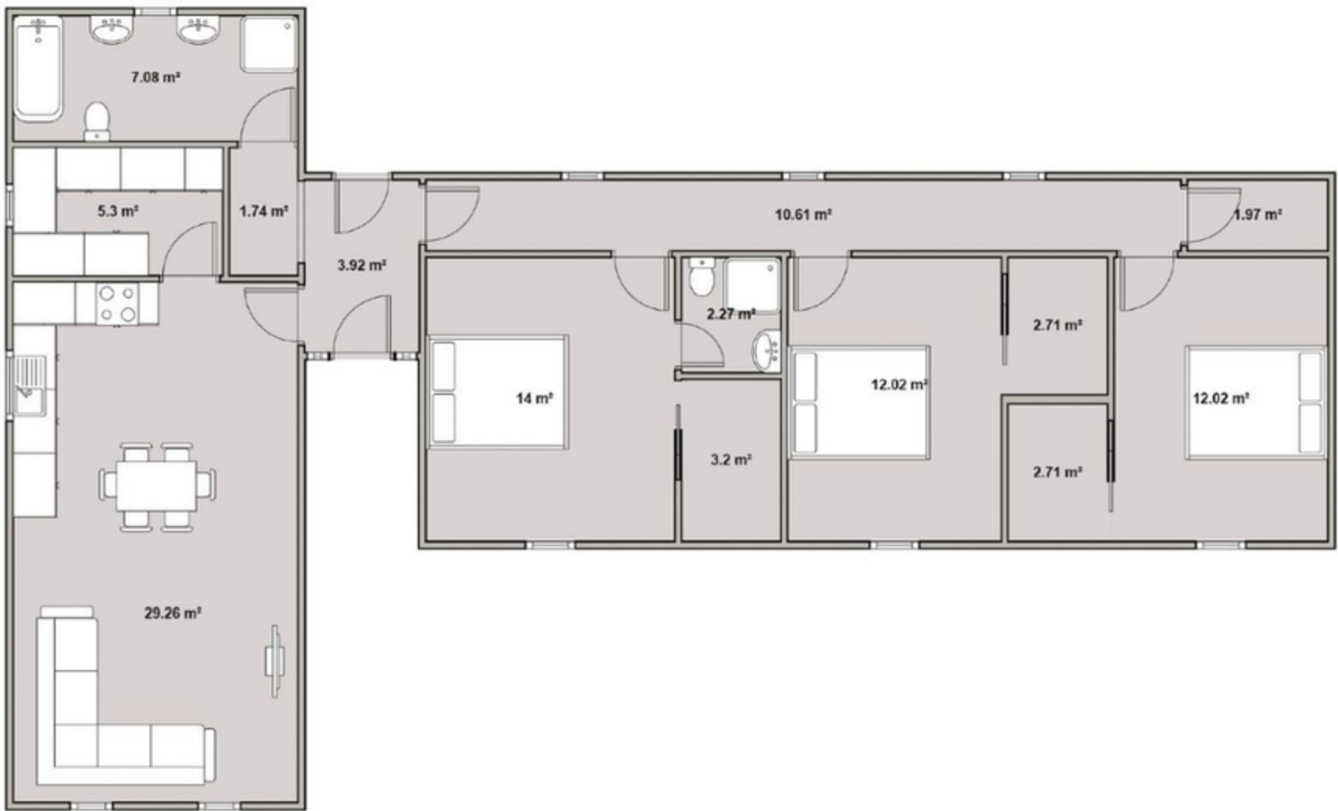
- ✔ Roof Trusses (NSAI APPROVED)
- ✔ Engineer's Design Certificate
- ✔ House Structure (Closed Panel System)
- ✔ 140mm CLS Treated Stud
- ✔ High Density Mineral Wool Insulation
- ✔ Airtightness Membrane & Tape
- ✔ 50mm PIR Over Stud
- ✔ Factory Fitted Service Cavity
- ✔ Render board finish (ready for your plasterer)
- ✔ Tiled roof
- ✔ Optional wall and roof zinc cladding (at additional cost)
- ✔ Double or Triple Glazed Windows/Doors
- ✔ Gutters and downpipes



We supply & fit in Ireland, The UK & Internationally

FLOOR PLANS & PRICING

T-SHAPED MODEL



OPTION 1:

TIMBER FRAME STRUCTURE (COMPLIANCE INSULATION PACKAGE 0.15 W/M2K U-VALUE)

Product/Service: Erected Timber Frame Structure with Compliance Insulation Package

[Contact for pricing](#)

OPTION 2:

TIMBER FRAME STRUCTURE (PASSIVE INSULATION PACKAGE 0.13 W/M2K U-VALUE)

Product/Service: Erected Timber Frame Structure with Passive Insulation Package

[Contact for pricing](#)

OPTION 3:

EXTERNAL RENDER PACKAGE (COMPLIANCE INSULATION PACKAGE 0.15 W/M2K U-VALUE)

Product/Service: Erected External Render with Compliance Insulation Package

[Contact for pricing](#)

OPTION 4:

EXTERNAL RENDER PACKAGE (PASSIVE INSULATION PACKAGE 0.13 W/M2K U-VALUE)

Product/Service: Erected External Render with Passive Insulation Package

[Contact for pricing](#)



Premier Timberframe Homes

SLANE MODEL

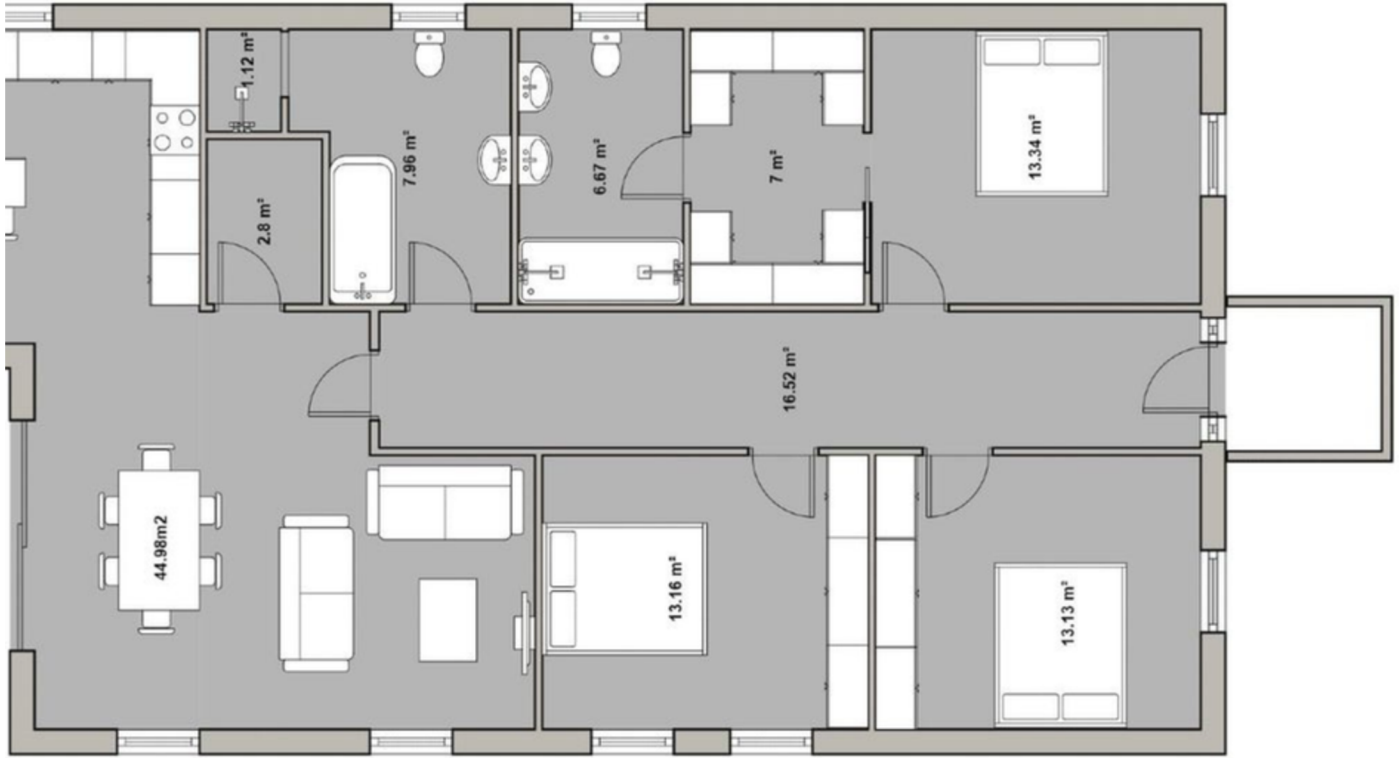
Warm, Affordable & Long-lasting Homes. Manufactured in Co. Kildare

- ✔ Roof Trusses (NSAI APPROVED)
- ✔ Engineer's Design Certificate
- ✔ House Structure (Closed Panel System)
- ✔ 140mm CLS Treated Stud
- ✔ High Density Mineral Wool Insulation
- ✔ Airtightness Membrane & Tape
- ✔ 50mm PIR Over Stud
- ✔ Factory Fitted Service Cavity
- ✔ Render board finish (ready for your plasterer)
- ✔ Tiled roof
- ✔ Optional wall and roof zinc cladding (at additional cost)
- ✔ Double or Triple Glazed Windows/Doors
- ✔ Gutters and downpipes



We supply & fit in Ireland, The UK & Internationally

SLANE MODEL



OPTION 1:

TIMBER FRAME STRUCTURE (COMPLIANCE INSULATION PACKAGE 0.15 W/M2K U-VALUE)

Product/Service: Erected Timber Frame Structure with Compliance Insulation Package

[Contact for pricing](#)

OPTION 2:

TIMBER FRAME STRUCTURE (PASSIVE INSULATION PACKAGE 0.13 W/M2K U-VALUE)

Product/Service: Erected Timber Frame Structure with Passive Insulation Package

[Contact for pricing](#)

OPTION 3:

EXTERNAL RENDER PACKAGE (COMPLIANCE INSULATION PACKAGE 0.15 W/M2K U-VALUE)

Product/Service: Erected External Render with Compliance Insulation Package

[Contact for pricing](#)

OPTION 4:

EXTERNAL RENDER PACKAGE (PASSIVE INSULATION PACKAGE 0.13 W/M2K U-VALUE)

Product/Service: Erected External Render with Passive Insulation Package

[Contact for pricing](#)



Premier Timberframe Homes

MAYO MODEL

Warm, Affordable & Long-lasting Homes. Manufactured in Co. Kildare

- ✔ Roof Trusses (NSAI APPROVED)
- ✔ Engineer's Design Certificate
- ✔ House Structure (Closed Panel System)
- ✔ 140mm CLS Treated Stud
- ✔ High Density Mineral Wool Insulation
- ✔ Airtightness Membrane & Tape
- ✔ 50mm PIR Over Stud
- ✔ Factory Fitted Service Cavity
- ✔ Render board finish (ready for your plasterer)
- ✔ Tiled roof
- ✔ Optional wall and roof zinc cladding (at additional cost)
- ✔ Double or Triple Glazed Windows/Doors
- ✔ Gutters and downpipes



We supply & fit in Ireland, The UK & Internationally

PRICING

MAYO MODEL



OPTION 1:

TIMBER FRAME STRUCTURE (COMPLIANCE INSULATION PACKAGE 0.15 W/M2K U-VALUE)

Product/Service: Erected 1-Storey Timber Frame Structure with Compliance Insulation Package

Total (ex. VAT): €80,802.70

OPTION 2:

TIMBER FRAME STRUCTURE (PASSIVE INSULATION PACKAGE 0.13 W/M2K U-VALUE)

Product/Service: Erected 1-Storey Timber Frame Structure with Passive Insulation Package

Total (ex. VAT): €92,681.10

OPTION 3:

EXTERNAL RENDER PACKAGE (COMPLIANCE INSULATION PACKAGE 0.15 W/M2K U-VALUE)

Product/Service: Erected 1-Storey External Render with Compliance Insulation Package

Total (ex. VAT): €181,696.90

OPTION 4:

EXTERNAL RENDER PACKAGE (PASSIVE INSULATION PACKAGE 0.13 W/M2K U-VALUE)

Product/Service: Erected 1-Storey External Render with Passive Insulation Package

Total (ex. VAT): €208,296.30



Premier Timberframe Homes

DUBLIN MODEL

Warm, Affordable & Long-lasting Homes. Manufactured in Co. Kildare

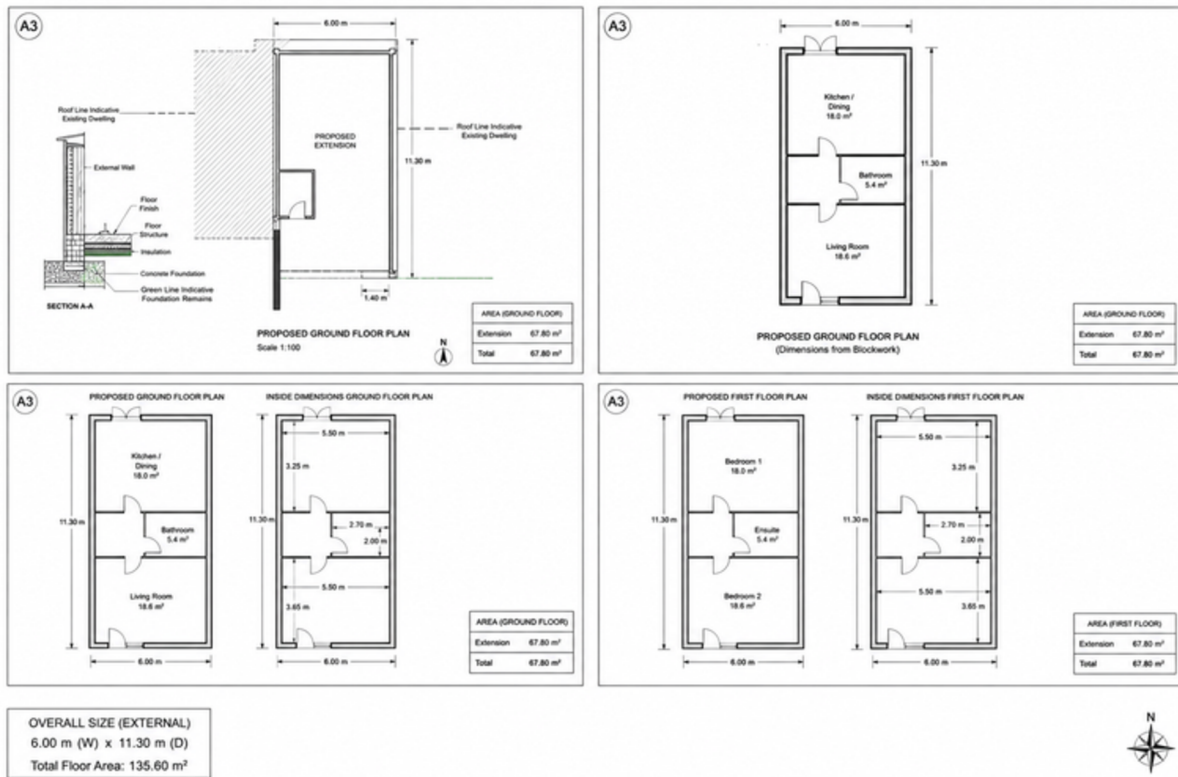
- ✔ Roof Trusses (NSAI APPROVED)
- ✔ Engineer's Design Certificate
- ✔ House Structure (Closed Panel System)
- ✔ 140mm CLS Treated Stud
- ✔ High Density Mineral Wool Insulation
- ✔ Airtightness Membrane & Tape
- ✔ 50mm PIR Over Stud
- ✔ Factory Fitted Service Cavity
- ✔ Render board finish (ready for your plasterer)
- ✔ Tiled roof
- ✔ Optional wall and roof zinc cladding (at additional cost)
- ✔ Double or Triple Glazed Windows/Doors
- ✔ Gutters and downpipes



We supply & fit in Ireland, The UK & Internationally

PRICING

DUBLIN MODEL



OPTION 1:

TIMBER FRAME STRUCTURE (COMPLIANCE INSULATION PACKAGE 0.15 W/M2K U-VALUE)

Product/Service: Erected 1-Storey Timber Frame Structure with Compliance Insulation Package

Total (ex. VAT): €66,590.70

OPTION 2:

TIMBER FRAME STRUCTURE (PASSIVE INSULATION PACKAGE 0.13 W/M2K U-VALUE)

Product/Service: Erected 1-Storey Timber Frame Structure with Passive Insulation Package

Total (ex. VAT): €76,323.10

OPTION 3:

EXTERNAL RENDER PACKAGE (COMPLIANCE INSULATION PACKAGE 0.15 W/M2K U-VALUE)

Product/Service: Erected 1-Storey External Render with Compliance Insulation Package

Total (ex. VAT): €143,664.40

OPTION 4:

EXTERNAL RENDER PACKAGE (PASSIVE INSULATION PACKAGE 0.13 W/M2K U-VALUE)

Product/Service: Erected 1-Storey External Render with Passive Insulation Package

Total (ex. VAT): €165,832.50



Premier Timberframe Homes

ROSCOMMON MODEL

Warm, Affordable & Long-lasting Homes. Manufactured in Co. Kildare

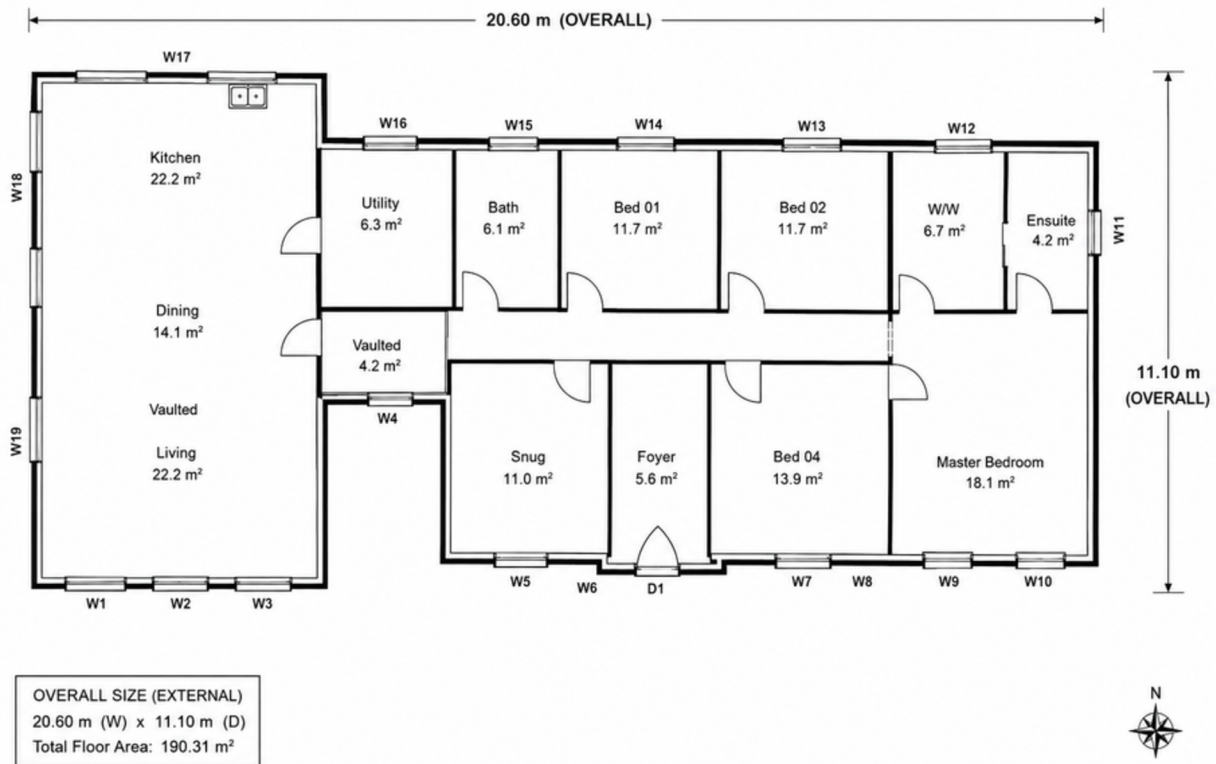
- ✔ Roof Trusses (NSAI APPROVED)
- ✔ Engineer's Design Certificate
- ✔ House Structure (Closed Panel System)
- ✔ 140mm CLS Treated Stud
- ✔ High Density Mineral Wool Insulation
- ✔ Airtightness Membrane & Tape
- ✔ 50mm PIR Over Stud
- ✔ Factory Fitted Service Cavity
- ✔ Render board finish (ready for your plasterer)
- ✔ Tiled roof
- ✔ Optional wall and roof zinc cladding (at additional cost)
- ✔ Double or Triple Glazed Windows/Doors
- ✔ Gutters and downpipes



We supply & fit in Ireland, The UK & Internationally

PRICING

ROSCOMMON MODEL



OPTION 1:

TIMBER FRAME STRUCTURE (COMPLIANCE INSULATION PACKAGE 0.15 W/M2K U-VALUE)

Product/Service: Erected 1-Storey Timber Frame Structure with Compliance Insulation Package

Total (ex. VAT): €71,639.26

OPTION 2:

TIMBER FRAME STRUCTURE (PASSIVE INSULATION PACKAGE 0.13 W/M2K U-VALUE)

Product/Service: Erected 1-Storey Timber Frame Structure with Passive Insulation Package

Total (ex. VAT): €81,542.18

OPTION 3:

EXTERNAL RENDER PACKAGE (COMPLIANCE INSULATION PACKAGE 0.15 W/M2K U-VALUE)

Product/Service: Erected 1-Storey External Render with Compliance Insulation Package

Total (ex. VAT): €148,299.62

OPTION 4:

EXTERNAL RENDER PACKAGE (PASSIVE INSULATION PACKAGE 0.13 W/M2K U-VALUE)

Product/Service: Erected 1-Storey External Render with Passive Insulation Package

Total (ex. VAT): €170,759.34

The logo consists of a yellow outline of a house with a gabled roof. The text "Premier Timberframe Homes" is written in white, bold, sans-serif font inside the house shape.

Premier Timberframe Homes

A photograph showing the interior of a timber frame house under construction. The structure is made of light-colored wood, with a prominent gabled roof. The walls are partially covered with OSB (Oriented Strand Board) sheathing. A window is visible in the background, showing a green landscape. The floor is made of wooden joists, and some construction materials are visible in the foreground.

CONTACT US TODAY

(087) 096 0704

| www.premiertimberframehomes.ie

| info@premiertimberframehomes.ie